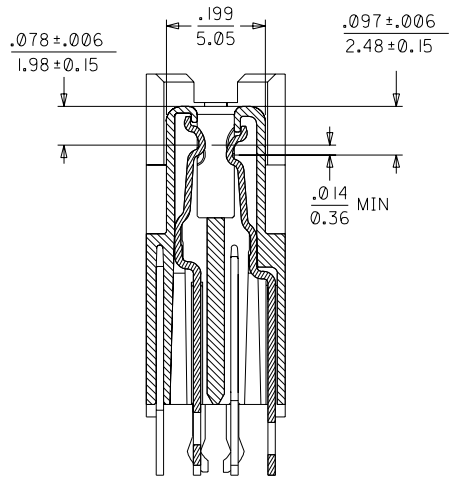
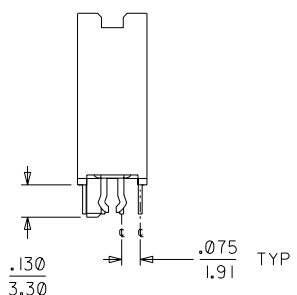
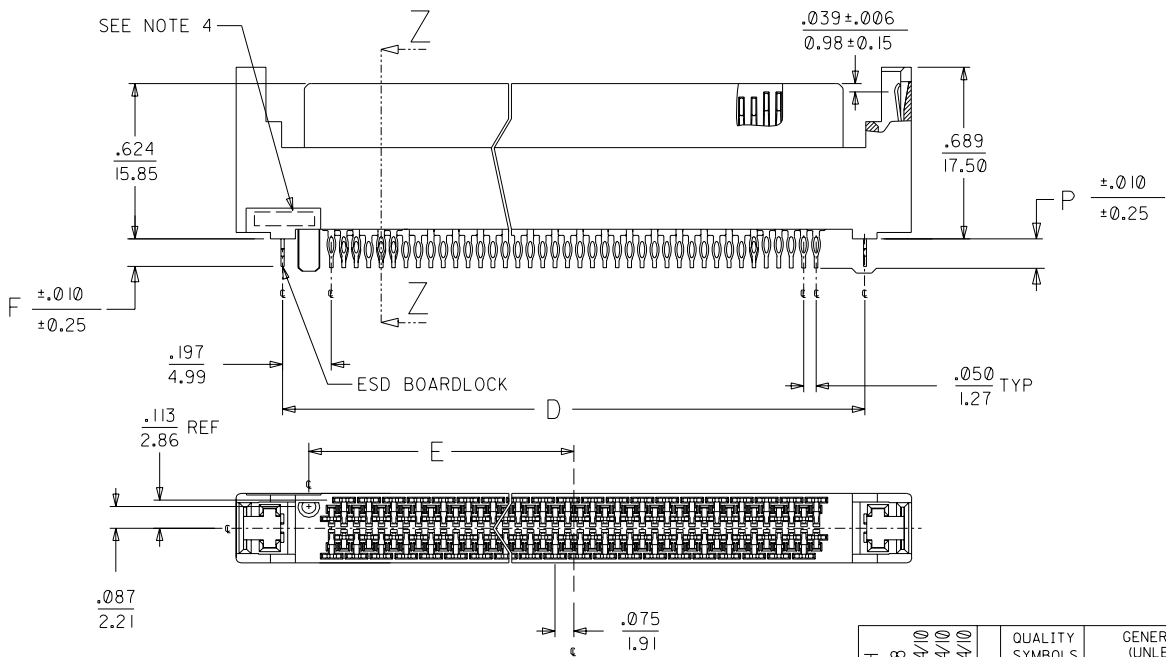
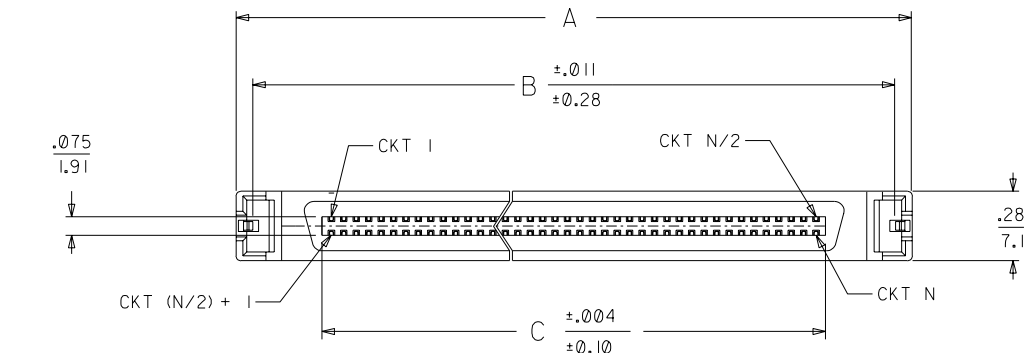


NOTES:

1. MATERIAL:  
HOUSING: I.R. COMPATIBLE POLYMER, GLASS FILLED, UL 94 V 0, BLACK  
TERMINALS: COPPER ALLOY  
BOARDLOCK: COPPER ALLOY
2. FINISH:  
TERMINALS: SELECTIVE GOLD IN CONTACT AREA  
THICKNESS = 30 MICROINCHES / 0.763 MICROMETERS  
SELECTIVE TIN-LEAD IN TAIL AREA  
THICKNESS = 100 MICROINCHES / 2.54 MICROMETERS  
NICKEL UNDERPLATE OVERALL.  
ESD BOARDLOCK:  
TIN-LEAD OVERALL.
3. PRODUCT SPECIFICATION: PS-73826-0000
4. FOUR DIGIT DATE CODE IN THIS LOCATION (WK YR).
5. CONTACT GAP WILL ACCOMMODATE MATING CONNECTOR OF:  
.063+/- .003 (1.60+/- 0.08)



SECTION Z-Z  
SCALE - 4:1

2	B
1	D
SHT	REV
REVISE ON CAD ONLY	

CHG HSG PEG LENGTH EC NO. UCP2003-2168 DRWN: WHITE 03/04/0 CHK: BBARKER 03/04/0 APPR: SMILLER 03/04/0	QUALITY SYMBOLS	MAJOR $\nabla = 0$	CRITICAL $\nabla C = 0$
	DESCRIPTION	REV	
D			

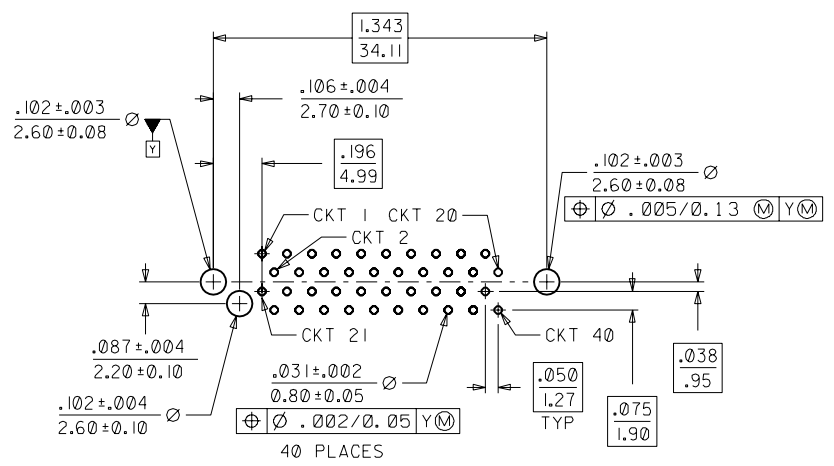
GENERAL TOLERANCES: (UNLESS SPECIFIED)	mm	INCH
	4 PLACES $\pm 0.$	$\pm .$
	3 PLACES $\pm 0.$	$\pm 0.005$
	2 PLACES $\pm 0.13$	$\pm 0.10$
	1 PLACE $\pm 0.25$	$\pm .$
ANGULAR: $\pm 1/2^\circ$		
DRAFT WHERE APPLICABLE MUST REMAIN WITHIN DIMENSIONS		

SCALE 2:1	DESIGN UNITS <input type="checkbox"/> mm <input checked="" type="checkbox"/> INCH
DRAWN BY & DATE ACHAMMER 98/05/07	
CHECKED BY & DATE ACHAMMER 98/05/07	
APPROVED BY & DATE BANAKIS 98/05/07	
CAD FILENAME S7382901.DGN	

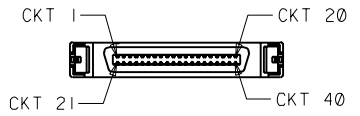
DIMENSIONS: <input type="checkbox"/> mm <input checked="" type="checkbox"/> INCH <input type="checkbox"/> mm ONLY		THIRD ANGLE PROJECTION
TITLE: SALES ASSEMBLY SCA-2 EXTENDED HEIGHT PRESS-FIT RECEPTACLE		
MOLEX INCORPORATED		
MATERIAL NO. SEE TABLE	DRAWING NO. S	SHEET NO.

THIS DRAWING CONTAINS INFORMATION THAT IS INCORPORATED AND SHOULD NOT BE USED WITH

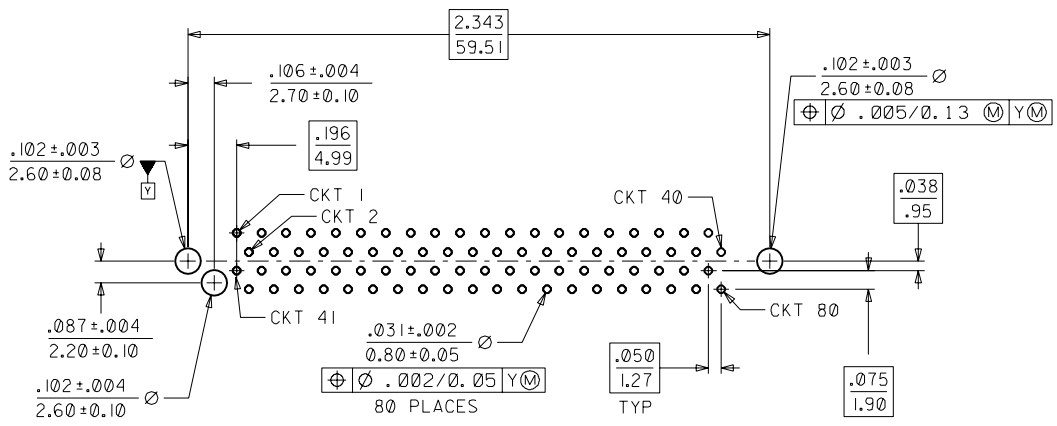
MATERIAL NUMBER	CIRCUIT SIZE	DIMENSION A	DIMENSION B	DIMENSION C	DIMENSION D	DIMENSION E	DIMENSION F	DIMENSION P	ADVANCED TERMINALS / CIRCUITS (SECTION Z-Z, SHEET 1)
738290001	80	2.717/(69.01)	2.583/(65.61)	2.025/(51.44)	2.343/(59.51)	1.066/(27.06)	.109/(2.77)	.125/(3.18)	1, 36, 37, 38, 39, 40, 41, 42, 43, 45, 46, 75, 76, 77, 78, 79, 80
738290002	40	1.717/(43.61)	1.583/(40.21)	1.025/(26.04)	1.343/(34.11)	.566/(14.38)	.109/(2.77)	.125/(3.18)	21, 22, 23, 26, 29, 32, 35, 36, 37, 38, 39, 40



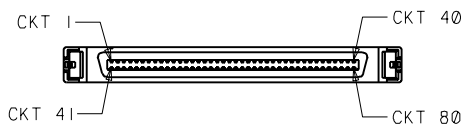
PCB LAYOUT FOR 40 CIRCUIT  
COMPONENT SIDE  
RECOMMENDED BOARD THICKNESS = .093 MIN



40 CIRCUIT TERMINAL SEQUENCE  
SCALE - 1:1



PCB LAYOUT FOR 80 CIRCUIT  
COMPONENT SIDE  
RECOMMENDED BOARD THICKNESS = .093 MIN



80 CIRCUIT TERMINAL SEQUENCE  
SCALE - 1:1

SEE SHEET 1	EC NO. / DRWN: / CHK: / APPR: / B	DESCRIPTION MAJOR CRITICAL C	QUALITY SYMBOLS		GENERAL TOLERANCES: (UNLESS SPECIFIED)		SCALE 2:1	DESIGN UNITS <input type="checkbox"/> mm <input checked="" type="checkbox"/> INCH	THIRD ANGLE PROJECTION	DIMENSIONS: <input type="checkbox"/> mm <input checked="" type="checkbox"/> INCH <input type="checkbox"/> mm ONLY		SHT	REV	
							DRAWN BY & DATE ACHAMMER 98/05/07		TITLE: SALES ASSEMBLY SCA-2 EXTENDED HEIGHT PRESS-FIT RECEPTACLE					
							CHECKED BY & DATE ACHAMMER 98/05/07		APPROVED BY & DATE BANAKIS 98/05/07		MATERIAL NO. / DRAWING NO. SEE TABLE / SD-73829-001			
							CAD FILENAME S7382902.DGN		MATERIAL NO. / DRAWING NO. SEE TABLE / SD-73829-001		SHEET NO. 2			
DRAFT WHERE APPLICABLE MUST REMAIN WITHIN DIMENSIONS												THIS DRAWING CONTAINS INFORMATION THAT IS PROPRIETARY TO MOLEX INCORPORATED AND SHOULD NOT BE USED WITHOUT WRITTEN PERMISSION.		SIZE B